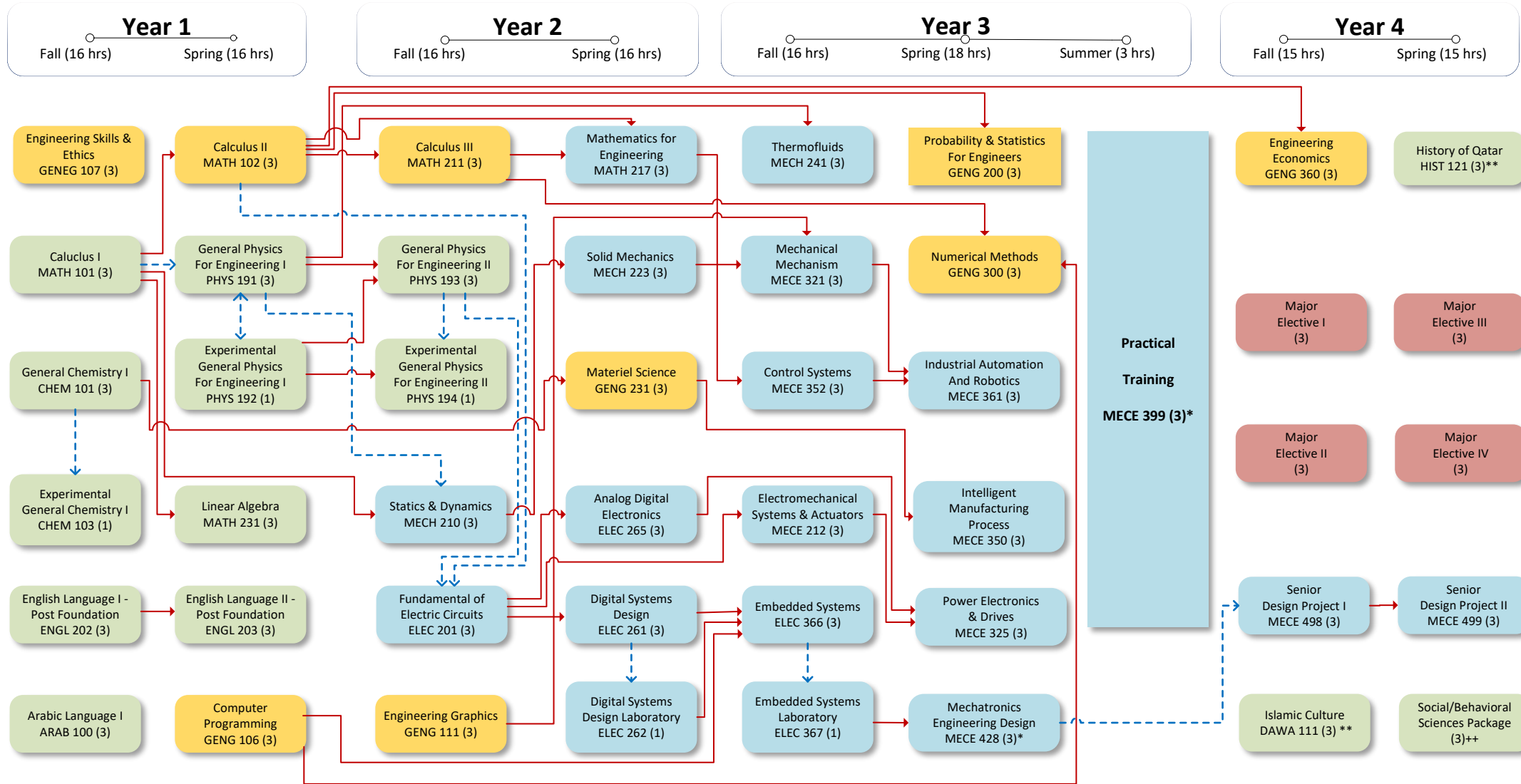


**** ROADMAP TO YOUR GRADUATION

Mechatronics Engineering Program - 2025

Department of Electrical Engineering

Total Credit Hours : 131
Total No. of Courses : 47



- **Core Curriculum Requirements**
Credit hrs(33)
Courses (13)
- **College Requirements**
Credit hrs(27)
Courses (9)
- **Major Core Requirements**
Credit hrs(59)
Courses (21)
- **Major Electives**
Credit hrs(12)
Courses (4)

Pre-requisites
A prerequisite is a course which must usually be completed in a term earlier than the course for which registration is attempted and prerequisites are being checked.

Concurrent Pre-requisites
The concurrency indicator is used to modify a prerequisite requirement and indicate that the prerequisite course can be taken either in an earlier term or in the same term as the course in which registration is attempted.

* Requires departmental approval
** Offered both in Arabic and English
++Student must complete a minimum of 3 credit hours from Social/Behavioral Sciences package